



Toll Free 800-458-7454

Phone 718-492-3648

Fax 718-439-0039

Manufactured by
ATLANTIC PASTE & GLUE CO., INC.
 170 - 53rd Street, Brooklyn, N.Y. 11232

PROFESSIONAL & RETAIL FLY

MODEL No. 9144SD



New glue formula that will catch even the largest horse flies.

Master Pack: 24/4 Pack
 Display
 Master Weight: 2.0 Lbs, .9 kgs.
 Trap Weight: 7 - 8 grams
 Trap Size: 1.5" X 30"
 Case Size: 10.75" X 5.0' X
 5.0625"
 27.3 cm. X 12.7 cm. X 12.86
 cm.
 Cube: .1574
 Cases Per Pallet: 280

MODEL 948 Giant Fly Glue Trap

Where flies, roaches and mice share the same fate.

Fluorescent Chartreuse Color - Government and University tests prove that Fluorescent Chartreuse is the most suitable color for catching flying insects. The Giant Fly Glue Trap measures over two feet lengthwise and offers a full 288 square inches of catch area. Use it flat or bent into a cylinder. It is effective around garbage dumpsters, stables, animal pens, or anywhere flies and other flying insects are a problem.

- It's 12" x 24" size provides 288 sq. feet of catching area - the most available to Pest Control Operators

today.

- Totally versatile. This one trap has been proven effective against flies, roaches and even mice.
- Irresistible food grade cherry or peanut butter scents with the new fluorescent chartreuse color, proven by Government and University testing, as the most irresistible color in attaching flying insects
- Safe and nontoxic.
- Multi bait and sex attractant applied entire length of trap for greater efficacy.
- In each case of 948 you'll find a coupon with a 10 value and details about our frequent Buyers Program.



MODEL 930 & 935 Spider Web - Fly Glue Trap

ATLANTIC PASTE & GLUE Co., Inc. introduces the **Spider Web™**, a new and inexpensive way to catch flies. The Spider Web is a 12-inch(30cm)-wide roll with 23 feet(7m) of doublesided adhesive. The sharp looking, chartreuse fluorescent color has been University tested and is proven to be a successful color to attract flies. Printed on the product in black ink are spider webs, as well as flies. These depictions, combined with the color are very effective in catching flies. Additional multibait & sex attractants are also applied to



enhance the catching ability. Also featured on the Spider Web is a new glue. This adhesive, in the making for over a year, is more pliable than ever. Even the largest flies won't be able to set themselves free. It's neat roll design makes Spider Web simple and very easy to use. The user rolls out the desired amount, and when it is full of flies, simply roll up the used portion. No cutting or tearing is necessary. More than 100,000 flies can be caught on one trap!

PERFECT FOR USE IN ANIMAL PRODUCTION AND PROCESSING AREAS:

Designed to quickly provide large reductions in adult fly populations during the peak fly season, and as an early season preventive treatment. By reducing the fly population quickly, the reproductive cycle is interrupted. Use of the Spider Web™ Fly Glue Trap will reduce the number of times it is necessary to spray.

This reduces stress to young animals, and prevents the development of chemically resistant fly populations.

Horses - Cattle - Swine - Poultry

HORSEBARNS,
COWBARNS

DAIRY
COOLING
AREAS

KENNELS GREENHOUSES

TRASH AND
GARBAGE
PROCESSING
AREAS

Results

Nipcam Test.

The Nipcam Group of Watkinsville, Georgia agreed to evaluate the Spider Web™ Fly Glue Trap by setting up tests at a local dairy farm. Two similar calf barns of 3,800 square feet each, were chosen for the test. The Spider Web™ Fly Glue Traps were hung, over the calves, from the rafters, at the label rate of one per 600 square



feet, a total of six rolls per building. The rolls were pulled out to expose eight feet of glue surface. Installation was on September 23rd and the results were recorded on October 5th and again on October 14th. At each reading, the number of flies caught was counted, and the Spider Web™ Fly Glue Traps were rolled up, and another eight feet of glue surface was exposed. No insecticides were used during the test period.

200,000 flies trapped in three weeks...

The 12 Spider Web™ Fly Glue Traps caught more than 200,000 flies in three weeks. Counts conducted in a series of tests revealed that fly populations were reduced by nearly 80%. The projected breeding capability of flies caught, assuming half the flies are female, would result in $100,000 \times 150$ eggs per life cycle = 15,000,000 flies.

Why Integrated Methods of Fly Control?

There is a particularly urgent need for a more effective method of fly control in the dairy industry. The nutrient rich feed and manure in and around calf and cattle barns, creates a perfect environment for breeding flies. The resulting explosion of fly populations is an irritating nuisance for the young animals, farmers and surrounding communities, as well as a health threat in and around milking parlors.

In the past, dairy farmers have used sprays and some ineffective glue products to try to gain control of exploding fly populations. The problem is that flies breed very rapidly, (seven days from larvae to mature, adult) and female flies can lay 150 or more eggs in their short life. Keeping up with this rapid growth has become nearly impossible.

The New Dynamite 911.

Flying Insects find It irresistible and so will you.

**Safe and Effective, Discreet and Sanitary, Easy & Economical
Even in Food Preparation Areas**

Irresistible Because It's Hidden:

Pests get caught, invisibly, on proven
CATCHMASTER UV-resistant glue



DYNAMITE 911 Lighted Fly Trap

Electrical Fly Unit with 2 Black Light Bulbs.

Dust Proof U-Shape Designed Glue Shield Holder.

No unsightly dead flies visible.

Model #911 - Dynamite Lighted Fly Trap Size: 20.5" x 7.6875" x 4.81";

52.0 cm x 19.5 cm x 12.2 cm

boards concealed inside the attractive lighting fixture. Guaranteed 4 weeks of life and no oozing glue. TRAPPED FLIES CAN'T BE SEEN.

Irresistible Because It's Effective :

It's an unbeatable combination. Black light, warmth, sex attractant, multibaits, their favorite color fluorescent chartreuse, and the most powerful glue on the market wrapped around the bulb. University tests show equal catch versus the standard non electrical trap in the industry today. Call or write for a copy of the complete test results.

Irresistible Because It's Environmentally Sound:

No exposure to hazardous chemicals, no electronic zap, no airborne contamination, no fumes.

Irresistible Because It's Sanitary:

Meets FDA & USDA standards-even in & about food preparation areas. And there's no need to touch

Replacement Bulbs

Model #901C - 25 Watt B.L. Bulbs, Packed 2 Per BOx, 12/2 Packs Per Case

Model #901 D - 25 Watt B L. Bulbs. Bulk Pack. 24 Bulbs Per Case

MODEL #924 - Glue Trap Insert For 901 FLY LIGHT also Replacement Glue Board For The Vector™ Fly Light

Model No. 924 Glue Trap for 901 (FITS MICROGEN TRAP)
Master Pack: 144 Glue Trap Inserts 24 Traps Per Box/6 Boxes Per Case

Master Weight: 13.0 Lbs., 5.8 kgs.

Trap Weight: 30 - 36 grams

Trap size: 17.0" X 4.75". 43.18 cm. X 12.06 cm.

Case Size: 17.3125" X 5.8" X 6.75" 43.97 cm. X 14.76 cm. X 17.14 cm.

MODEL #925 - Glue Trap Insert For DYNAMITE 911

Ultra Violet Resistant Glue.
Half inch border completely
around the perimeter of trap
to eliminate touching the glue.

Two scores provide easy
forming of trap to fit into trap
holder.

Cherry or Peanut Butter
Scented.

Guaranteed to last 4-weeks.

Easy installation and removal
of glue trap.

U-Shaped design which,
wraps itself around bulb,
takes only seconds to insert.

DYNAMITE 911 Lighted Fly
Glue Trap has no Secondary
High or Low Voltage Systems
to maintain.

Meets FDA and USDA
Standards even in and around
food preparation areas.



Model #925 - Glue Trap Size: 17" x 8"; 43.18 cm x 20.4 cm

Packed 25 Per Box - 6 Boxes Per case

Total Count 150 Traps Per Case

CATCHMASTER GLUE STICK Fly Traps Models #962 & #912

Atlantic Paste & Glue Co., Inc., incorporates six special luring elements into its CatchMaster GOLD STICK Fly Traps. Research has shown the following combination of lures to be highly attractive to flies and other flying insects up to a distance of 26 feet away: (1) the color itself, gold, (2) the reflective properties of the shiny metallic surface which causes an "open window of light" effect, (3) Atlantic Paste & Glue's specially formulated cherry scented adhesive, (4) a non-toxic sex attractant, and (5&6) Atlantic Paste & Glue's two proprietary attractants which are now incorporated into all its glue products.

The GOLD STICK model #962 measures two feet long and offers a full 96 square inches of catching surface. It's new and improved square end caps allow you to lay it on or stand it behind, beside or under food processing equipment or hang it either horizontally or vertically by means of it's end hooks. GOLD STICK model#962 is designed primarily for professional "behind the scene" applications.

The GOLD STICK model#912 measures 10.5" long and offers a full 48 square inches of catching surface. Housed in a decorative, simulated light wood grained box, it is attractively designed for professional "out front" applications. Simply place or hang the box in a corner where trapped flies will be out of sight. Safe to use in sensitive public areas.

Both GOLD STICK model#962 and GOLD STICK model#912 are 100% ecologically safe. They contain no toxins, insecticides, hazardous chemicals, vapors or offensive odors. They are clean, long lasting and effective in high and low temperatures, both indoors and out.



FOR THE CONTROL OF:

Domestic Flies - House Flies - Stable Flies - Bottle Flies - Blowflies - Cluster Flies - Fruit Flies - Drain Flies - Vinegar Flies - Phorid Flies - Black Flies - Horse Flies and other flying insects.

FOR USE IN:**HOMES**

Garages - Basements - Attics - Atriums - Patios - Greenhouses - Gardens

INDUSTRIES & INSTITUTIONS

Hospitals - Nursing Homes - Restaurants - Schools - Hotels - Nurseries
Food Processing Plants - Supermarkets - Factories - Warehouses - Docks
Garbage & Dump Areas - Animal Research Centers - Zoos - Kennels - Pet Shops

FARMS & RANCHES

Barns - Poultry Houses - Stables - Hay Operations Silos - Dairy Operations
Milk Rooms - Animal Pens & Yards ALSO Recreation Parks - Boat Docks
Public Restrooms - Ships

Model No. 962 Large Gold Stick

Master Pack: 24 Traps Per Display

Master Weight: 9 Lbs., 4.0 kgs.

Trap Weight: 135 grams

Trap Size: 2.625" x 2.625" x 24.5"; 6.6 cm. x 6.6cm. x 62.2cm.

Model No. 912 Mini Gold Stick

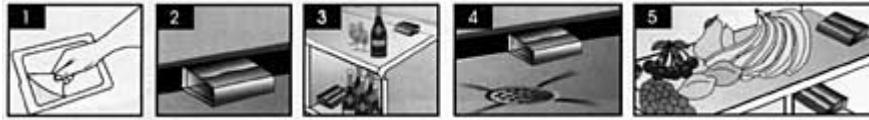
Master Pack: 12 Traps Per Display

Master Weight: 2.5 Lbs., 1.1 kgs.

Trap Weight: 62-66 grams

Trap Size: 2.625" x 2.625" x 10.5"; 6.6cm. x 6.6cm. x 26.7 cm.

New Catchmaster**Fruit Fly & Insect Glue Trap****MODEL #100FF**



Safe to use in Restaurants, Hospitals, Pet Shops, Day Care Centers, Nursing Homes, Food Serving and Food Preparation Areas.

1. Safe to use in both food and non-food areas.
2. Use as a stationary glue trap in food handling and food processing areas to control fruit flies and other flying insects.
3. Place glue board trap in localized areas where fruit flies have been observed. More than one trap may be needed for heavy infestations. Catchmaster Fruit Fly trap contains no insecticides
4. Can be used flat or folded in tunnel shape

Approved for all food areas.

I. P. M. (Integrated Pest Management) Tool for Fruit Flies and Drain Flies.

Fruit Fly Products Specifications

100 traps per case

Shipping Weight: 4.5 Lbs.,
2.0 Kg.

Baited with food grade
banana scent

Trap Size: 8.5" x 5.25"; 21.6
cm. x 13.3 cm.

Ctn. Size: 9" x 6.125" x
5.875"; 22.8 cm. x 15.5 cm.
x 14.9 cm.

Weight per Trap: 0.6 oz;
18.0 grams

MODEL No. 915 Wasp & Fly Catcher

**"Under
Construction"
Call for information**

or [e-mail us](#)



[CONTACT US](#)

[ABOUT US](#)

[WHY GLUE TRAPS](#)

[PRODUCTS](#)

[CONTACT US](#)

[HOME](#)